

# Business Intelligence and Data Warehousing

## Case Study Midwest Truck Manufacturer

*Aculocity assisted management at a high-growth, heavy-duty truck manufacturer set up a comprehensive BI system to monitor their key business metrics through an automated dashboard.*

*The engagement started with guided workshops run by Aculocity to help management identify the business data necessary to support better decision-making. The business managers examined what information past decisions had been based on and determined what subsets of data should be made available across the organization.*

*Aculocity consultants then built a comprehensive BI system that integrated and reconciled the data from different systems. This system automated the generation, production, and delivery of reports so that management could focus on interpreting the data.*

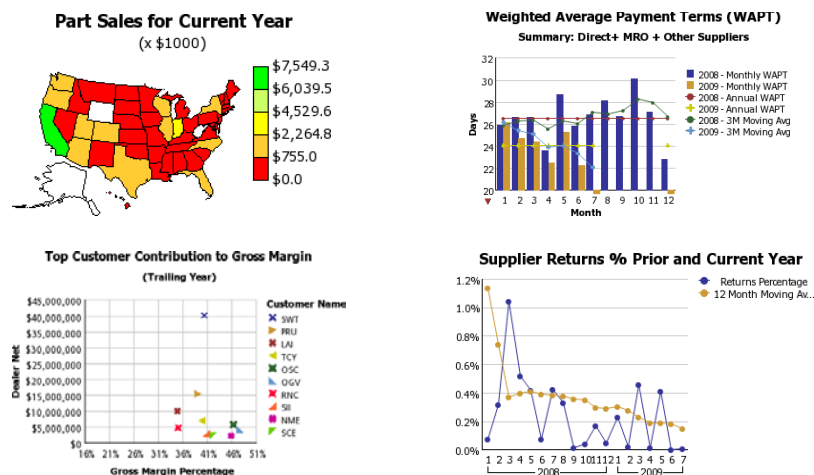
*By using a consistent set of metrics to both measure past performance and guide business planning, management is better equipped to answer what happened, what is happening, and what will happen next.*

## Dashboard Monitoring Systems

Aculocity deploys business intelligence technologies so that companies can collect, analyze, and report on key business metrics. Our consultants utilize IBM Cognos 8 Business Intelligence with ReportNet to help you improve corporate performance, and also can employ Microsoft products and our experience programming in .NET / SQL server (i.e. MS Reporting Services) to turn your data into information.

Business Intelligence Systems from Aculocity help you improve your operations by providing employees with historical, current, and predictive views of business operations. Working across departments and locations, Aculocity aggregates all of your data into a single system. Through analysis this system reveals your company's strengths and weaknesses so that strategic decision makers can be mindful of them during the business planning process.

## Recently deployed Business Intelligence Charts



## How you can drive change

Aculocity consultants help our clients pragmatically and proactively manage their business data and intelligence operations. We recommend that you support better decision-making processes in your organization by:

- Harvesting sufficient volumes of high-quality data.
- Supporting continuous iterative exploration and investigation of past business decisions.
- Differentiating between decisions made by instinct, rules-of-thumb, and hard data.
- Adopting an enterprise level approach to managing data and analytical tools.